

Advantages and technical details

- Easy to apply
- Self adhesive
- Suitable for contact with the bitumen
- UV resistant
- Excellent adhesion to many surfaces
- Applicable at low temperatures
- Unaffected by weather conditions
- Color selection possible due to the use of painted aluminum foil
- Economical.



It is very easy to apply BTM Bitüself.

- Clean and dry the surface to be used for application.
- Slip enough the band under the Bitüself rolls.
- Apply properly the adhesive part on the surface.
- Roll a cylinder on it or stretch it and press.



BTM Bitüself and Bitüself Star are produced in 3 different colors.
(Red, Green, Aluminum)

Roll sizes (10 - 15 - 20 – 30- 60)

In the repair of areas like walls, parapets



Clean the surface to be used for application



Measure the surface



Cut in the measured length



Apply force after applying



BTM Bitüself and BTM Bitüself Star self-adhesive waterproofing strips are resistant to external flame spread.

btm Bitümlü Tecrit Maddeleri Sanayi ve Ticaret A.Ş.

Kemalpaşa Organize Sanayi Bölgesi Mah. Gazi Bulvarı
No:152 35730 Kemalpaşa - İZMİR / TURKEY
Tel: +90 (232) 877 04 02 (8 Line) Fax: +90 (232) 877 04 10
www.btm.co • www.btmshingle.com • e-mail: export@btm.co

fb / btmyalitim



btm®



REVITALIZING SOLUTIONS FOR BUILDINGS

btm® bitüself

Self-adhesive waterproofing tapes



btm® bitüself
Star

Water and vapor proof BTM Bitüself and BTM Bitüself Star also maintain their adhesion and water waterproofing properties also in wet environments. Because of its flexibility, it can be easily used on every surface shape (straight or curved) and it easily adapts to the shape of the surface. Because the outer surface is covered with aluminum, it is not affected by harmful ultraviolet rays of the sun. Because it is self-adhesive, it can be applied safely to materials are not resistant to high temperatures such as wood, plastic. As it is produced from SBS (Synthetic Rubber) based bitumen, it maintains its flexibility in every climate zone, it does not crack or break.



BTM Bitüself waterproofing strip has a very wide use area. It is used as a complementary material to the roofs of the buildings, it has use areas around the roof windows, at the bottom of the chimney, in places such as rainwater gutters and water drainage pipes. It is also used in wet areas such as bathrooms and toilets. In addition, it is a product that is used for insulation of hatch covers on cargo ships, repair of the construction containers, and even in cars for sound and vibration prevention.

In the outer spaces of the buildings



On roof and chimney edges



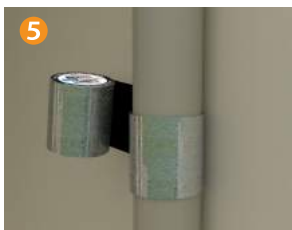
On roof window and ventilations



On roof gutter



On arbor connections



On rainwater discharge systems



For underground pipe protection

On wet areas



For floor isolation



For bathtub repair



For protection of water pipes against rust



On washbasin drain pipe



On sanitary system pipes



On ventilating ducts

On land vehicles



For bumper repair



For inner fender repair



For step repair



For inner door protection and repair

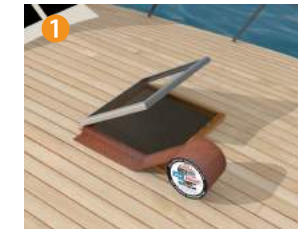


For window ledge repair

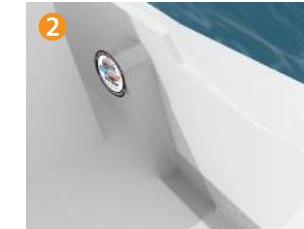


For vehicle body repair

On vessels



On ventilating windows



On fiber and polyester parts



On window channel edges



On handrails and metal parts



On Ships



On containers